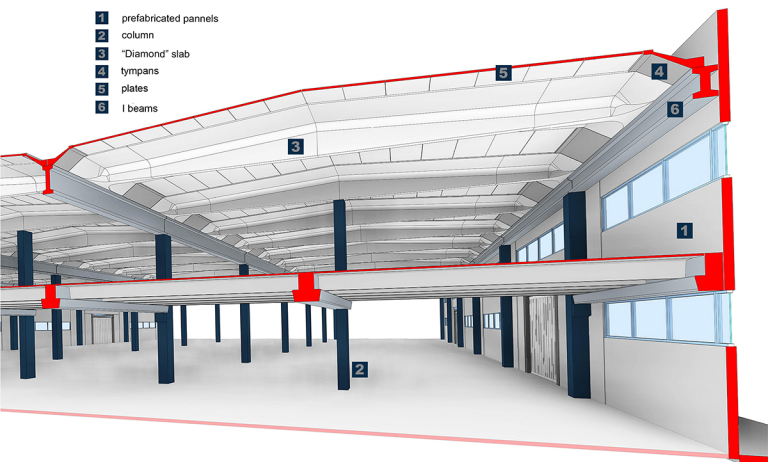


- 1 prefabricated pannels
- 2 column
- 3 "Diamond" slab
- 4 tympan
- 5 plates
- 6 I beams

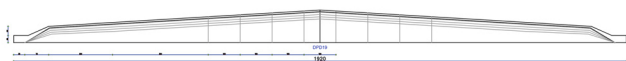
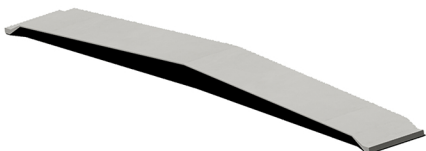


## “DPD” slab

The "Diamond" slabs are prefabricated prestressed elements that are made with reinforced concrete RCK brand-55N / mm2 and steel B450C N / mm2 and cable for prestressing with fpk 1860 N / mm2. This element will be used for the roof cover.

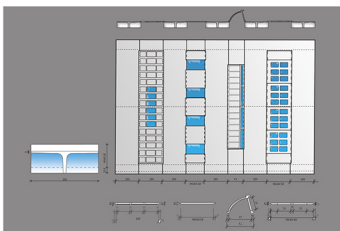
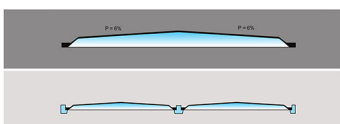
The "Diamond" system is an answer to the most particular clients that are seeking for functionality, quality in the place of work, natural light, acoustic isolation and high fire safety ; all of these combined with high reliability and optical cost of maintenance and management. The "Diamond" system is combined with plates, tympan and elements used to light as polycarbonate combined with plates.

Lenght – from 12 in 26 m  
Height – max 160 cm  
Width – max 253 cm



### “Diamond” system -Technical variations

| DPD   | H   | L    |
|-------|-----|------|
| DPD12 | 81  | 1200 |
| DPD14 | 87  | 1400 |
| DPD16 | 93  | 1600 |
| DPD18 | 99  | 1800 |
| DPD20 | 105 | 2000 |
| DPD22 | 111 | 2200 |
| DPD24 | 117 | 2400 |
| DPD26 | 123 | 2600 |



#### ✓ Design

In compliance with the biggest expectations, this system offers a competitive design, with clean lines.

#### ✓ Use

Used for different typologies of buildings, from industrial to commercial ones.

#### ✓ Flexibility

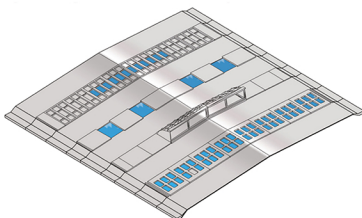
Flexibility in configuration and dimensions.

#### ✓ Stability

High durability due to the structure and materials used.

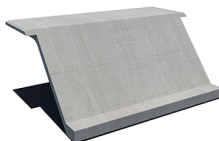
### Multiple choices in coverage

These elements are part of the "Diamond" system, used to cover the industrial and commercial buildings in combination with tympan, plates and polycarbonate (for lighting). These combinations enable a high visual quality of the building.



## Tympan

Lenght – 120cm  
Height – min 22cm, max 57cm.  
Width – 250cm



## Plates

Lenght – variable  
Height – 5cm  
Width – 250cm

