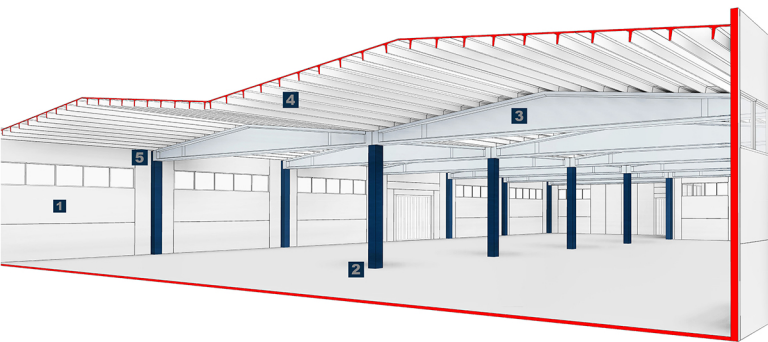


- 1 prefabricated pannels
- 2 column
- 3 "Double slope" beam
- 4 TT slabs
- 5 shell for side columns



DP beams

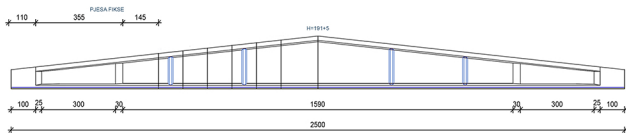
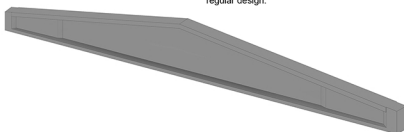
"Double slope" beams are prefabricated prestressed elements that are made with reinforced concrete brand RCK -50N / mm² and steel B450C N / mm² and cable for pre-stressing with f_{pk} 1860 N / mm². This beams are used in roof and the first floor coverage accompanied by threaded bars that arise from columns to make the connection.

Length – from 12 to 25 m
 Height – max 196 cm
 Width – max 55cm

Flexibility
 Combinations to give a larger selection.

Use
 Used for all building typologies, from industrial to storage.

Aesthetic
 Illuminated architectural spaces, with clean lines and regular design.



"DOUBLE SLOPE" SYSTEM - TECHNICAL VARIATIONS

Variable of height in base of length

DP	L (cm)	H (cm)
DP14	1400	136
DP16	1600	146
DP18	1800	156
DP20	2000	171
DP22	2200	181
DP25	2500	196